

38 Parklands, Gateshead, NE10 8YP

£159,950

Nestled in the desirable area of Parklands, Gateshead, this immaculately presented semi-detached house offers a perfect blend of modern living and comfort. Having been refurbished to a high standard within the last three years, this property is ready for you to move in and make it your own.

As you enter, you are greeted by a welcoming hallway that leads to a spacious living and dining room. This area is filled with natural light thanks to its dual aspect windows and features convenient storage cupboards, making it both practical and inviting. The contemporary kitchen boasts stunning sparkle Quartz work surfaces and comes equipped with an integrated oven and fridge/freezer, ideal for those who enjoy cooking and entertaining. A delightful garden room, with French doors that open onto the rear patio, provides a seamless transition between indoor and outdoor living, perfect for enjoying sunny days or hosting gatherings. The first floor comprises two generously sized double bedrooms, one of which features built-in wardrobes, offering ample storage space. The well-appointed bathroom completes this level, ensuring comfort and convenience. Additional highlights of this property include plantation shutters adorning all windows, enhancing both privacy and style. The rear garden offers a tranquil space for relaxation, while the double driveway with a gated section provides secure off-street parking. This charming home is a true gem in a sought-after location, and viewing is highly recommended to fully appreciate all it has to offer. Don't miss the opportunity to make this lovely house your new home.

ENTRANCE HALLWAY

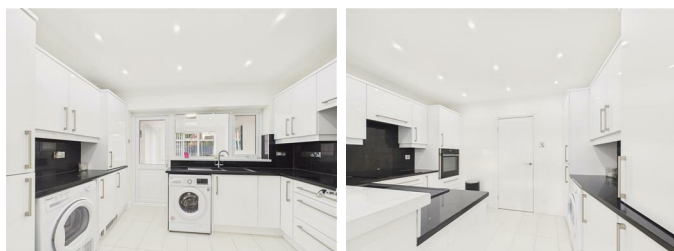
LIVING/DINING ROOM

19'10" x 11'6" (6.07m x 3.53m)



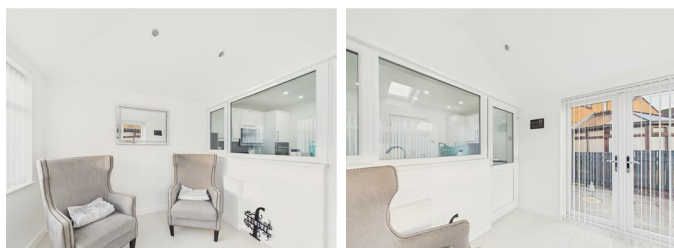
KITCHEN

11'3" x 8'6" (3.45m x 2.60m)



GARDEN ROOM

8'10" x 8'8" (2.71m x 2.66m)



FIRST FLOOR LANDING

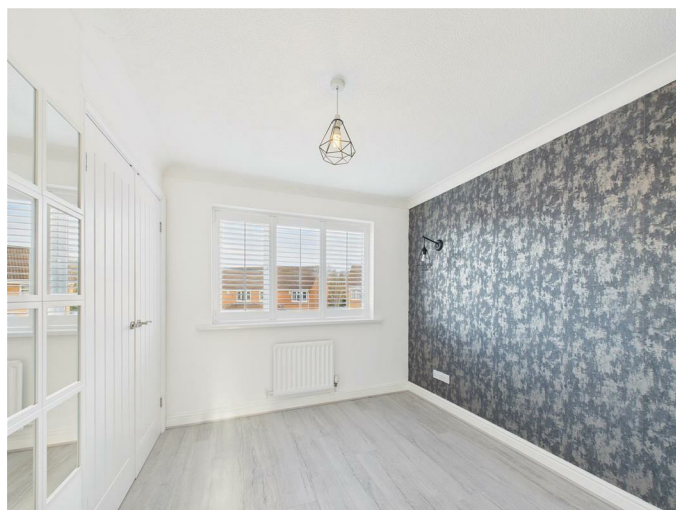
BEDROOM ONE

11'7" into wardrobes x 10'6" (3.54m into wardrobes x 3.22m)



BEDROOM TWO

9'11" x 8'6" (3.04m x 2.61m)



BATHROOM

7'2" x 6'2" (2.20m x 1.89m)



DRIVEWAY/GATED DRIVEWAY

EXTERNAL

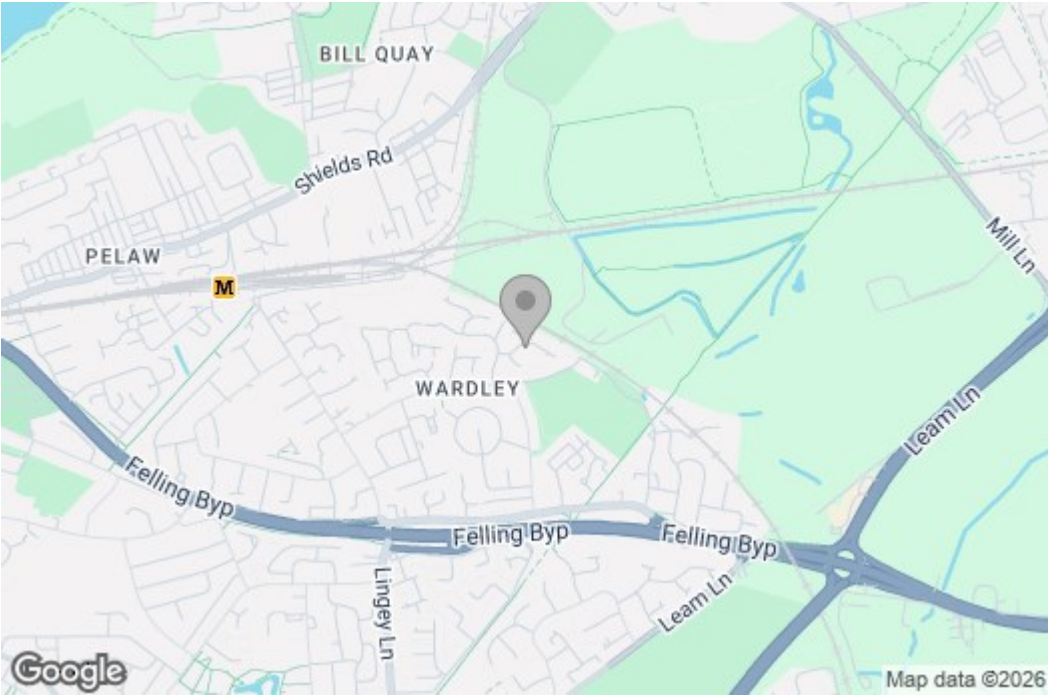


Property disclaimer

IMPORTANT NOTE TO PURCHASERS: We endeavour to make our sales particulars accurate and reliable, however, they do not constitute or form part of an offer or any contract and none is to be relied upon as statements of representation or fact. The services, systems and appliances listed in this specification have not been tested by us and no guarantee as to their operating ability or efficiency is given. All measurements have been taken as a guide to prospective buyers only, and are not precise. Floor plans where included are not to scale and accuracy is not guaranteed. If you require clarification or further information on any points, please contact us, especially if you are travelling some distance to view. Fixtures and fittings other than those mentioned are to be agreed with the seller. We cannot also confirm at this stage of marketing the tenure of this house.

Floor Plan

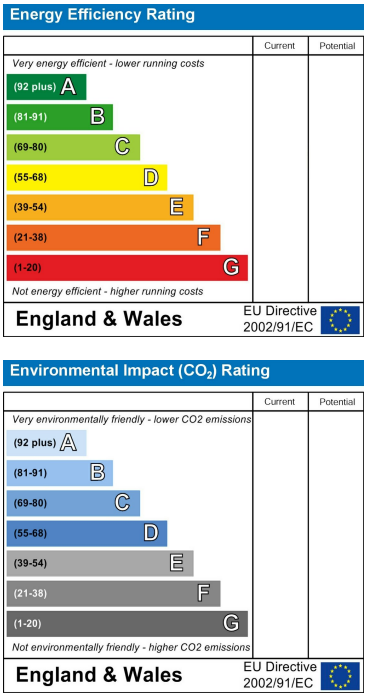
Area Map



These particulars, whilst believed to be accurate are set out as a general outline only for guidance and do not constitute any part of an offer or contract, purchaser should not rely on them as statements of representation of fact, but must satisfy themselves by inspection or otherwise as to their accuracy. No person in this firm's employment has the authority to make or give an representation or warranty in respect of the property.

429 Durham Road
Gateshead
NE9 5AN

Energy Efficiency Graph



0191 4874211
home@gordon-brown.co.uk
www.gordon-brown.co.uk